

# Polycom® Vortex® InstantDesigner™

## Frequently Asked Questions

### What is Polycom InstantDesigner?

A recent addition to our Conference Composer™ design software for Windows®, the patent pending Polycom InstantDesigner wizard guides the system designer through the steps required to create high performance Vortex audio conferencing and sound reinforcement solutions.

The Polycom InstantDesigner handles all the details of creating zone to zone gains for sound reinforcement, configuring the acoustic echo cancellers, interfacing to common audio and video equipment, bussing between devices, configuring presets, creating volume control macros, and preconfiguring logic ports for push to talk microphones.

### What are the primary benefits of Polycom InstantDesigner?

The immediate benefits include:

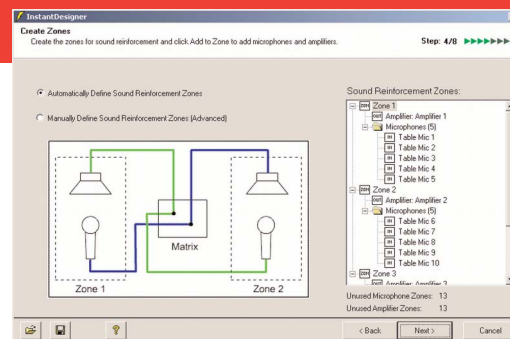
- Dramatically reduced design time - from hours to minutes (or less)
- More consistent A/V designs
- Satisfied end-users due to smoother and less costly installations
- A reduced learning curve for your staff, which will allow you to confidently use multiple Vortex audio products in any type of installation
- Improved profitability on your installations

### How does the InstantDesigner wizard work?

The A/V integrator or consultant simply chooses the necessary inputs, outputs (including the new Polycom VSX 7000 or VSX 8000 video codecs) and optionally the sound reinforcement zones needed for the desired system, and Polycom InstantDesigner automatically selects the appropriate Vortex devices necessary to implement the system, maps the inputs and outputs to the devices, and creates the Conference Composer design files required to implement the design. It is easy to upload these design files to the Vortex devices to complete the configuration. All of this can be done within a matter of minutes.

### What types of inputs are recognized by Polycom InstantDesigner?

You may select inputs from microphones, line level program audio sources such as DVD players (including stereo or mono devices), telephone interfaces, SoundStation VTX 1000™, and video codecs.



### What types of outputs can be selected with the program?

Polycom InstantDesigner will automatically select outputs for video codecs and telephone interfaces if their inputs have already been selected. Other outputs that can be added include assistive listening devices, audio amplifiers (mono or stereo), and recording outputs (mono or stereo).

If you select multiple amplifiers, you will be given the option to use Polycom InstantDesigner to set up microphone/loudspeaker zones (see screen capture above). You can manually establish zone settings for microphones and amplifiers, or InstantDesigner can do it for you.

Can I use Polycom InstantDesigner to help me determine my Vortex equipment needs prior to starting the job?


Yes. This is one of the great features of Polycom InstantDesigner. You can "plug in" your audio requirements, and InstantDesigner will tell you which Vortex products you need for the job. You can select Vortex products based on either the lowest list price or the least amount of rack space required.

### How do I get a copy of the InstantDesigner software?

The Polycom InstantDesigner software is included in the Vortex Conference Composer software which can be downloaded from the Polycom Resource Center at <http://extranet.polycom.com>.

For more information, see the InstantDesigner application note (it may be downloaded in PDF format via the Polycom Resource Center on the internet).



Polycom Moscow   
zakaz@polycom-moscow.ru  
T +7 95-924-25-25  
[www.polycom-moscow.ru](http://www.polycom-moscow.ru)

