



Poly Documentation

Contents

1. Poly Studio V12 Release Notes.	3
Poly Studio V12 Release Notes 1.4.8.	3
What's new in Poly Studio V12 1.4.8.	4
Supported video conferencing clients and applications.	6
Products supported on Poly Studio V12 1.4.8.	7
Updating firmware.	7
Resolved issues in Poly Studio V12 1.4.8.	8
Known issues in Poly Studio V12 1.4.8.	8
Poly Studio V12 Release Notes 1.4.7.	8
What's new in Poly Studio V12 1.4.7.	9
Supported video conferencing clients and applications.	9
Products supported on Poly Studio V12 1.4.7.	10
Updating firmware.	10
Resolved issues in Poly Studio V12 1.4.7.	10
Known issues in Poly Studio V12 1.4.7.	11
Poly Studio V12 Release Notes 1.4.6.	12
What's new in Poly Studio V12 1.4.6.	13
Supported video conferencing clients and applications.	16
Products supported on Poly Studio V12 1.4.6.	16
Updating firmware.	17
Resolved issues in Poly Studio V12 1.4.6.	17
Known issues in Poly Studio V12 1.4.6.	17
Product resources and additional information.	18
Security updates.	18
Getting help.	18

Poly Studio V12 Release Notes

This document provides end-users and administrators with information about a specific release of the featured product.

- [Poly Studio V12 Release Notes 1.4.8](#)
Poly announces the release of Poly Studio V12 software version 1.4.8.
- [Poly Studio V12 Release Notes 1.4.7](#)
Poly announces the release of Poly Studio V12 software version 1.4.7
- [Poly Studio V12 Release Notes 1.4.6](#)
Poly announces the release of Poly Studio V12 software version 1.4.6
- [Product resources and additional information](#)
This section provides resources and additional information for your product.

Poly Studio V12 Release Notes 1.4.8

Poly announces the release of Poly Studio V12 software version 1.4.8.

Software version: 1.4.8

Release date: October 2025

Note	Please note that once you update to 1.4.8 it is not possible to downgrade.
-------------	--

For more information, review the [Poly Studio V12 Release Notes](#).

- [What's new in Poly Studio V12 1.4.8](#)
Poly Studio V12 1.4.8 supports the HP Poly Studio A2 Table Mic.
- [Supported video conferencing clients and applications](#)
Use Poly Studio V12 as the camera, microphone, and speakers for conferencing applications on your computer.
- [Products supported on Poly Studio V12 1.4.8](#)
Poly tests Poly Studio V12 with a wide range of products. The following table doesn't provide a complete inventory of compatible equipment; it indicates products tested for compatibility with this release.
- [Updating firmware](#)
Manually or automatically update the firmware on your device. If your system is connected to the internet and provisioned to Poly Lens Cloud or registered via Lens Desktop, you can update your device using Poly Lens.
- [Resolved issues in Poly Studio V12 1.4.8](#)

Review the resolved issues in this release.

- [Known issues in Poly Studio V12 1.4.8](#)

There are no known issues in this release.

What's new in Poly Studio V12 1.4.8

Poly Studio V12 1.4.8 supports the HP Poly Studio A2 Table Mic.

The HP Poly Studio A2 audio room solution delivers an inclusive hybrid meeting experience that ensures participant voices are clearly heard wherever they are in the room.

To use a HP Poly Studio V12 Table Mic with a Poly Studio V12, connect a single HP Poly Studio V12 Table Mic directly into the Poly Studio V12. You don't need an A2 Audio Bridge. Only one HP Poly Studio V12 Table Mic is supported on a Poly Studio V12.

The following HP Studio A2 Table Microphones are supported with Poly Studio V12:

- White: p/n B22X4AA
- Black: p/n B22X6AA

- [Connect a HP Poly Studio A2 Table Microphone](#)

Connect your Poly Studio V12 to an HP Poly Studio A2 Table Microphone.

- [Enable Automatic Mic Switching](#)

You can optionally allow the Poly Studio V12 system to switch automatically between the HP Poly Studio A2 microphone and the camera's internal mic.

Connect a HP Poly Studio A2 Table Microphone

Connect your Poly Studio V12 to an HP Poly Studio A2 Table Microphone.

Connecting a HP Poly Studio A2 Table Microphone

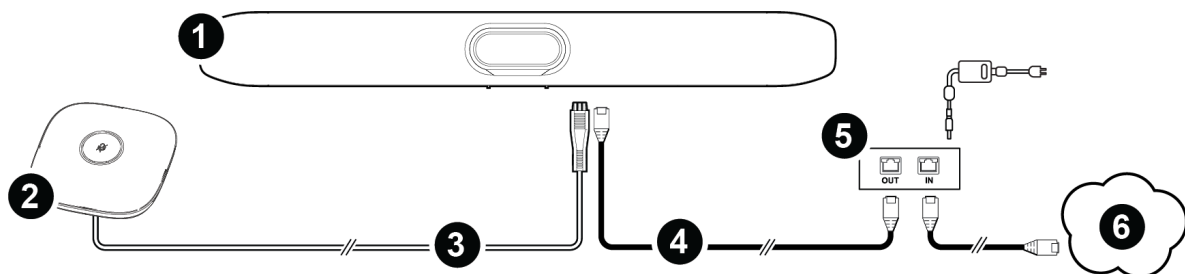


Table 1. Poly Studio V12 and HP Poly Studio A2 - PoE setup descriptions

Ref. number	Port description
1	Poly Studio V12 Video Bar
2	HP Poly Studio A2 Table Mic
3	A2 Table Mic cable
4	Ethernet cable
5	PoE injector
6	LAN

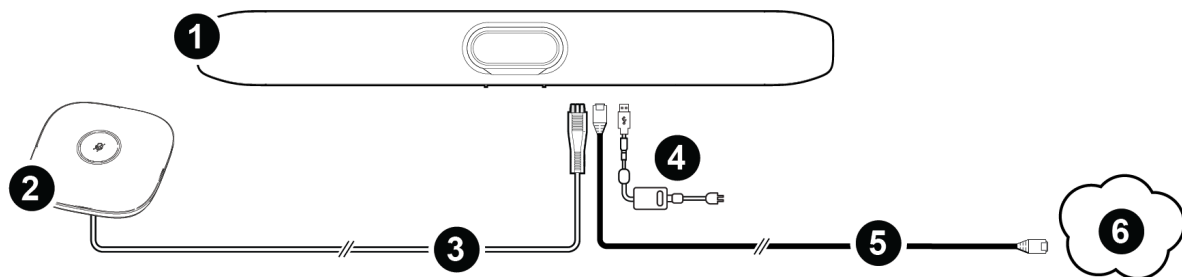


Table 2. Poly Studio V12 and HP Poly Studio A2 - USB setup descriptions

Ref. number	Port description
1	Poly Studio V12 Video Bar
2	HP Poly Studio A2 Table Mic
3	A2 Table Mic cable

Ref. number	Port description
4	USB power supply
5	Ethernet cable
6	LAN

You can connect HP Poly Studio A2 Table Mic to the Poly Studio V12 using the Phoenix audio port on the V12.

When connected, the system will automatically detect the HP Poly Studio A2 Mic and audio input will switch from the internal Poly Studio V12 microphone.

Enable Automatic Mic Switching

You can optionally allow the Poly Studio V12 system to switch automatically between the HP Poly Studio A2 microphone and the camera's internal mic.

When automatic mic switching is enabled, the Poly Studio V12 dynamically selects the best mic to use based on the signal strength at the A2 mic versus the V12 internal mics.

To switch automatically between the HP Poly Studio A2 microphone and the camera's internal mic, complete the following steps:

- 1 Open Lens Desktop or log in to Lens Cloud and navigate to the device's **Audio Settings**.
- 2 Enable **Auto Mic Switching**.

Supported video conferencing clients and applications

Use Poly Studio V12 as the camera, microphone, and speakers for conferencing applications on your computer.

Table 1. Products tested with this version

Application	Tested Versions
Poly Lens Desktop	Current version
Microsoft Teams	Current version
Zoom	Current version
Google Meet	Current version

Products supported on Poly Studio V12 1.4.8

Poly tests Poly Studio V12 with a wide range of products. The following table doesn't provide a complete inventory of compatible equipment; it indicates products tested for compatibility with this release.

Poly strives to support any system that's standards-compliant, and Poly investigates reports of Poly systems that don't interoperate with other standards-compliant vendor systems.

Poly recommends that you upgrade all your Poly systems with the latest supported software versions. Any compatibility issues may already have been addressed by software updates.

Table 1. Products tested with this version

Product	Notes
Poly Studio R30/USB/V12/V52/V72 Bluetooth Remote	Connect a Poly Bluetooth remote to the system.
HP Poly Studio A2 Table Microphone	You can connect a HP Poly Studio A2 Table Microphone to the system.

Updating firmware

Manually or automatically update the firmware on your device. If your system is connected to the internet and provisioned to Poly Lens Cloud or registered via Lens Desktop, you can update your device using Poly Lens.

On a Microsoft Windows computer, Windows Update automatically updates the firmware on your device unless Poly Lens Desktop or Poly Lens Room is installed on the computer.

MacOS doesn't provide firmware updates to the device using the built-in update service. On a MacOS computer, directly provision to Poly Lens Cloud to update the firmware.

For more information on updating your device, review the [Poly Lens Desktop App User Guide](#) .

Resolved issues in Poly Studio V12 1.4.8

Review the resolved issues in this release.

Note	These release notes may not include all resolved issues, User Experience updates, performance fixes, and upgrades. In addition, information is as-is at the time of release and is subject to change without notice.
-------------	--

Table 1. Resolved issues

Category	Issue ID	Description
Video	PECS-31369	Fixed an issue where Poly Studio V12 lost user configuration settings after power cycling.
Audio	PVENG-32235	While using a Poly Studio V12 in a Microsoft Teams call, a user's audio cut out while they were speaking.

Known issues in Poly Studio V12 1.4.8

There are no known issues in this release.

Note	These release notes don't provide a complete listing of all known issues for the software. Issues not expected to significantly impact customers with standard voice and video conferencing environments may not be included. In addition, the information in these release notes is provided as-is at the time of release and is subject to change without notice.
-------------	---

Poly Studio V12 Release Notes 1.4.7

Poly announces the release of Poly Studio V12 software version 1.4.7

Software version: 1.4.7

Release date: July 2025

For more information, review the [Poly Studio V12 Release Notes](#).

- [What's new in Poly Studio V12 1.4.7](#)

Poly Studio V12 1.4.7 is a maintenance release. It contains feature enhancements and important field fixes.

- [Supported video conferencing clients and applications](#)

Use Poly Studio V12 as the camera, microphone, and speakers for conferencing applications on your computer.

- [Products supported on Poly Studio V12 1.4.7](#)

Poly tests Poly Studio V12 with a wide range of products. The following table doesn't provide a complete inventory of compatible equipment; it indicates products tested for compatibility with this release.

- [Updating firmware](#)

Manually or automatically update the firmware on your device. If your system is connected to the internet and provisioned to Poly Lens Cloud or registered via Lens Desktop, you can update your device using Poly Lens.

- [Resolved issues in Poly Studio V12 1.4.7](#)

Review the resolved issues in this release.

- [Known issues in Poly Studio V12 1.4.7](#)

Review the known issues in this release.

What's new in Poly Studio V12 1.4.7

Poly Studio V12 1.4.7 is a maintenance release. It contains feature enhancements and important field fixes.

Supported video conferencing clients and applications

Use Poly Studio V12 as the camera, microphone, and speakers for conferencing applications on your computer.

Table 1. Products tested with this version

Application	Tested Versions
Poly Lens Desktop	Current version
Microsoft Teams	Current version
Zoom	Current version

Application	Tested Versions
Google Meet	Current version

Products supported on Poly Studio V12 1.4.7

Poly tests Poly Studio V12 with a wide range of products. The following table doesn't provide a complete inventory of compatible equipment; it indicates products tested for compatibility with this release.

Poly strives to support any system that's standards-compliant, and Poly investigates reports of Poly systems that don't interoperate with other standards-compliant vendor systems.

Poly recommends that you upgrade all your Poly systems with the latest supported software versions. Any compatibility issues may already have been addressed by software updates.

Table 1. Products tested with this version

Product	Notes
Poly Studio R30/USB/V12/V52/V72 Bluetooth Remote	Connect a Poly Bluetooth remote to the system.

Updating firmware

Manually or automatically update the firmware on your device. If your system is connected to the internet and provisioned to Poly Lens Cloud or registered via Lens Desktop, you can update your device using Poly Lens.

On a Microsoft Windows computer, Windows Update automatically updates the firmware on your device unless Poly Lens Desktop or Poly Lens Room is installed on the computer.

MacOS doesn't provide firmware updates to the device using the built-in update service. On a MacOS computer, directly provision to Poly Lens Cloud to update the firmware.

For more information on updating your device, review the [Poly Lens Desktop App User Guide](#).

Resolved issues in Poly Studio V12 1.4.7

Review the resolved issues in this release.

Note	These release notes may not include all resolved issues, User Experience updates, performance fixes, and upgrades. In addition, information is as-is at the time of release and is subject to change without notice.
-------------	--

Table 1. Resolved issues

Category	Issue ID	Description
Video	PVENG-26654	Fixed an issue where Poly Studio V12 with MTRoW using People Framing falsely detected and framed objects.
Video	PVENG-26650	Fixed an issue where Poly Studio V12 using Group Framing reframed every 30 to 60 seconds even when no action occurred.
Video	PVENG-26646	Fixed an issue where Poly Studio V12 with MTRoW using People Framing reframed participants who moved into proximity in 2 seconds rather than 4 seconds.
Video	PVENG-28896	Poly Studio V12 People Framing did not meet Zoom certificate specifications.
Video	PVENG-28698	Fixed an issue where when switching between Group Framing and manual mode, previously set PTZ values were stored rather than resetting.
Video	PVENG-31276	Fixed an issue where when using People Framing, and switching from gallery to framing off, Pan Tilt Zoom (PTZ) did not reset to fully zoomed out.

Known issues in Poly Studio V12 1.4.7

Review the known issues in this release.

Note	These release notes don't provide a complete listing of all known issues for the software. Issues not expected to significantly impact customers with standard voice and video conferencing environments may not be included. In addition, the information in these release notes is provided as-is at the time of release and is subject to change without notice.
-------------	---

Table 1. Known issues

Category	Issue ID	Description	Workaround
Video	PVENG-27558	USB video stress tests in the USB automation test suite fail for Poly Studio V12 if the stress iterations exceed 2000. When this happens, users see a black video screen when starting a call.	In the video conferencing client, select the relevant settings to mute video, and then unmute video.

Poly Studio V12 Release Notes 1.4.6

Poly announces the release of Poly Studio V12 software version 1.4.6

Software version: 1.4.6

Release date: April 2025

Note	<p>A small number of Poly Studio V12 USB units ship with an earlier firmware version than the official release build, 1.4.6-430149. Identify the firmware version by looking at the packaging or by checking in Poly Lens.</p> <p>If you have an earlier version of firmware than build number 1.4.6-430149, you must update to version 1.4.6 using Poly Lens Desktop, Poly Lens Room, or Windows Update. Updating your unit through Poly Lens Cloud provisioning isn't supported for this update. Refer to Updating firmware for further information.</p>
-------------	--

For more information, review the [Poly Studio V12 Release Notes](#).

- [What's new in Poly Studio V12 1.4.6](#)
Poly Studio V12 is a premium USB video bar with advanced features for immersive hybrid meetings in huddle and small meeting rooms.
- [Supported video conferencing clients and applications](#)
Use Poly Studio V12 as the camera, microphone, and speakers for conferencing applications on your computer.
- [Products supported on Poly Studio V12 1.4.6](#)

Poly tests Poly Studio V12 with a wide range of products. The following table doesn't provide a complete inventory of compatible equipment; it indicates products tested for compatibility with this release.

- [Updating firmware](#)

Manually or automatically update the firmware on your device. If your system is connected to the internet and provisioned to Poly Lens Cloud or registered via Lens Desktop, you can update your device using Poly Lens.

- [Resolved issues in Poly Studio V12 1.4.6](#)

There are no resolved issues in this release.

- [Known issues in Poly Studio V12 1.4.6](#)

Review the known issues in this release.

What's new in Poly Studio V12 1.4.6

Poly Studio V12 is a premium USB video bar with advanced features for immersive hybrid meetings in huddle and small meeting rooms.

- [Poly Studio V12 features and capabilities](#)

Poly Studio V12 video bars support the following features.

- [Poly Studio V12 hardware](#)

The following figure displays the hardware features on the Poly Studio V12 system. The table lists each feature numbered in the figure.

- [Poly Studio V12 system ports](#)

The following illustration and table explain the ports on your Poly Studio V12 system.

Poly Studio V12 features and capabilities

Poly Studio V12 video bars support the following features.

- 4K, 20 megapixels, 120° camera (Disclaimer: Higher resolution levels may not be supported by all operating systems or computers. To ensure optimal performance and minimize video latency, users are advised to set the video resolution to 1080p or lower.)
- Poly DirectorAI smart camera framing technology
Camera tracking options include people framing, speaker tracking, and group framing
- Built-in microphones that pick up sound within 4.57 m (15 ft)
- Poly NoiseBlockAI, which eliminates background and extraneous sound in common working environments
- Dual speakers during video calls. Stereo speakers when used as a PC accessory speaker.
- Simple to set up, manage, and use with Poly Lens

Poly Studio V12 mounting orientation

You can mount a Poly Studio V12 video bar above or below a display. Poly Studio V12 supports inverted video for below monitor mounting using the VESA or wall mount accessory (sold separately).

For information on mounting Poly Studio V12, refer to the Poly Studio V12 Quick Start Guide.

Poly Studio V12 hardware

The following figure displays the hardware features on the Poly Studio V12 system. The table lists each feature numbered in the figure.

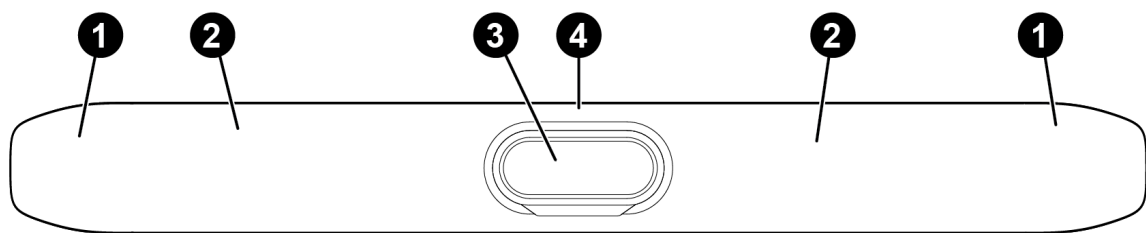


Table 1. Poly Studio V12 feature descriptions

Ref. number	Feature	Feature description
1	Speakers	Stereo audio output
2	Microphone array	Microphone array that captures audio
3	Camera	Camera with a removable privacy cover.
4	LED indicators	Indicates the system status

Poly Studio V12 system ports

The following illustration and table explain the ports on your Poly Studio V12 system.

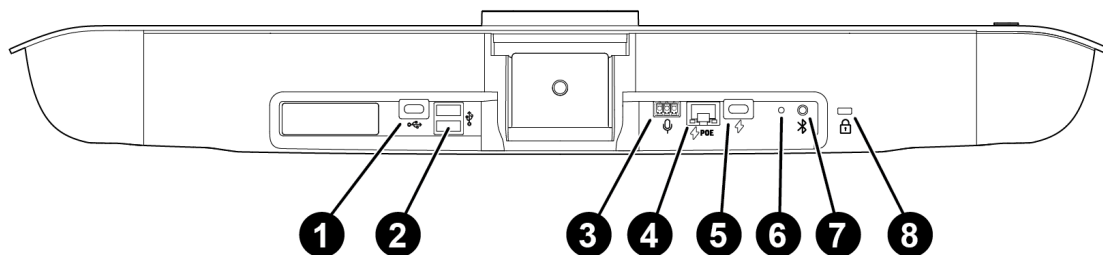


Table 1. Poly Studio V12 system port descriptions

Ref. number	Port description
1	USB Type-C port for connecting the device to a computer
2	USB Type-A ports for connecting peripherals (disabled by default; use Poly Lens to enable the USB Type-A ports)
3	Mini Phoenix audio connector (for future use; not currently supported)
4	PoE Ethernet port for power and network connectivity Use an HP PoE++ power kit (B5NH6AA) or 802.3bt class 6 PoE injector (65 W)
5	USB Type-C power connector Use the Poly USB-C power adapter (B92SVAA)
6	Pinhole reset
7	Remote control pairing button Note The Poly Studio V12 non-radio version doesn't support the Bluetooth feature.
8	Security lock

Supported video conferencing clients and applications

Use Poly Studio V12 as the camera, microphone, and speakers for conferencing applications on your computer.

Table 1. Products tested with this version

Application	Tested Versions
Poly Lens Desktop	Current version
Microsoft Teams	Current version
Zoom	Current version
Google Meet	Current version

Products supported on Poly Studio V12 1.4.6

Poly tests Poly Studio V12 with a wide range of products. The following table doesn't provide a complete inventory of compatible equipment; it indicates products tested for compatibility with this release.

Poly strives to support any system that's standards-compliant, and Poly investigates reports of Poly systems that don't interoperate with other standards-compliant vendor systems.

Poly recommends that you upgrade all your Poly systems with the latest supported software versions. Any compatibility issues may already have been addressed by software updates.

Table 1. Products tested with this version

Product	Notes
Poly Studio R30/USB/V12/V52/V72 Bluetooth Remote	Connect a Poly Bluetooth remote to the system.

Updating firmware

Manually or automatically update the firmware on your device. If your system is connected to the internet and provisioned to Poly Lens Cloud or registered via Lens Desktop, you can update your device using Poly Lens.

On a Microsoft Windows computer, Windows Update automatically updates the firmware on your device unless Poly Lens Desktop or Poly Lens Room is installed on the computer.

MacOS doesn't provide firmware updates to the device using the built-in update service. On a MacOS computer, directly provision to Poly Lens Cloud to update the firmware.

For more information on updating your device, review the [Poly Lens Desktop App User Guide](#).

Resolved issues in Poly Studio V12 1.4.6

There are no resolved issues in this release.

Note	These release notes may not include all resolved issues, User Experience updates, performance fixes, and upgrades. In addition, information is as-is at the time of release and is subject to change without notice.
-------------	--

Known issues in Poly Studio V12 1.4.6

Review the known issues in this release.

Note	These release notes don't provide a complete listing of all known issues for the software. Issues not expected to significantly impact customers with standard voice and video conferencing environments may not be included. In addition, the information in these release notes is provided as-is at the time of release and is subject to change without notice.
-------------	---

Table 1. Known issues

Category	Issue ID	Description	Workaround
Video	PVENG-27558	USB video stress tests in the USB automation test suite fail for Poly Studio V12 if the stress iterations exceed 2000. When this happens, users see a black video screen when starting a call.	In the video conferencing client, select the relevant settings to mute video, and then unmute video.

Product resources and additional information

This section provides resources and additional information for your product.

- [Security updates](#)

Review security information for Poly products.

- [Getting help](#)

Poly is now a part of HP. The joining of Poly and HP paves the way for us to create the hybrid work experiences of the future. Information about Poly products has transitioned from the Poly Support site to the HP Support site.

Security updates

Review security information for Poly products.

Review the [Security Bulletins](#) page for information about known and resolved security vulnerabilities.

Getting help

Poly is now a part of HP. The joining of Poly and HP paves the way for us to create the hybrid work experiences of the future. Information about Poly products has transitioned from the Poly Support site to the HP Support site.

The [Poly Documentation Library](#) is continuing to host the installation, configuration/administration, and user guides for Poly products in HTML and PDF format. In addition, the Poly Documentation Library provides Poly customers with information about the transition of Poly content from Poly Support to [HP Support](#).

The [HP Community](#) provides additional tips and solutions from other HP product users.